

## DESCRIPTION

The Impact Elite family of wall luminaires is the ideal complement to site design. Incorporating modular LightBAR™ technology, the Impact Elite luminaire provides outstanding uniformity and energy-conscious illumination. Combined with a rugged construction, the Impact Elite luminaire is the ideal facade and security luminaire for zones surrounding schools, office complexes, apartments and recreational facilities. UL/cUL listed for wet locations.

<b>Catalog #</b>		<b>Type</b>
<b>Project</b>		
<b>Comments</b>		<b>Date</b>
<b>Prepared by</b>		

## SPECIFICATION FEATURES

### Construction

Heavy-wall, die-cast aluminum housing and removable hinged door frame for precise tolerance control and repeatability. Hinged door inset for clean mating with housing surface and secured via two captive fasteners. Optional tamper-resistant Torx™ head fasteners offer vandal resistant access to the electrical chamber.

### Optics

Choice of six patented, high-efficiency AccuLED Optics™ distributions. Optics are precisely designed to shape the light output, maximizing efficiency and application spacing. AccuLED Optics technology creates consistent distributions with the scalability to meet customized application requirements. Offered Standard in 4000K (+/- 275K) CCT and minimum 70 CRI. Optional 3000K CCT, 5000K CCT and 5700K CCT.

### Electrical

LED drivers mount to die-cast aluminum back housing for optimal heat sinking, operation efficacy, and prolonged life. Standard drivers feature electronic universal voltage (120-277V 50/60Hz), 347V 60Hz or 480V 60Hz operation, greater than 0.9 power factor, less than 20% harmonic distortion, and are suitable for operation in -40°C to 40°C ambient environments. All fixtures are shipped standard with 10kV/10kA common – and differential – mode surge protection. LightBARs feature an IP66 enclosure rating and maintain greater than 95% lumen maintenance at 60,000 hours per IESNA TM-21. Emergency egress options for -20°C ambient environments and occupancy sensor available.

### Mounting

Gasketed and zinc plated rigid steel mounting attachment fits directly to 4" j-box or wall with the Impact Elite "Hook-N-Lock" mechanism for quick installation. Secured with two captive corrosion resistant black oxide coated allen head set screws concealed but accessible from bottom of fixture.

### Finish

Cast components finished in a five-stage super TGIC polyester powder coat paint, 2.5 mil nominal thickness for superior protection against fade and wear. Standard colors include black, bronze, grey, white, dark platinum and graphite metallic. RAL and custom color matches available. Consult the McGraw-Edison Architectural Colors brochure for the complete selection.

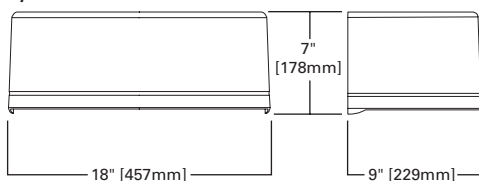
### Warranty

Five-year warranty.

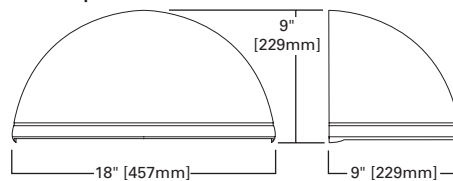


## DIMENSIONS

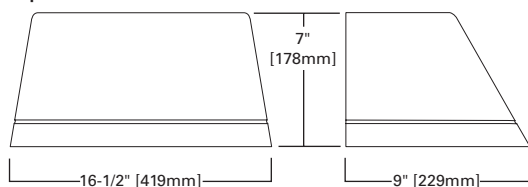
### Cylinder



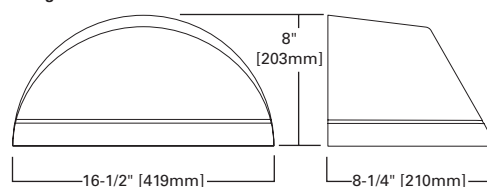
### Quarter Sphere



### Trapezoid



### Wedge



## ISC/ISS/IST/ISW IMPACT ELITE LED

1 - 2 LightBARs  
Solid State LED

WALL MOUNT LUMINAIRE

### CERTIFICATION DATA

UL/cUL Listed  
LM79 / LM80 Compliant  
IP66 LightBARs  
ISO 9001

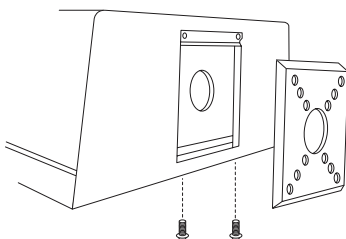
### ENERGY DATA

Electronic LED Driver  
>0.9 Power Factor  
<20% Total Harmonic Distortion  
120-277V/50 & 60Hz, 347V/60Hz,  
480V/60Hz  
-40°C Minimum Temperature  
40°C Ambient Temperature Rating

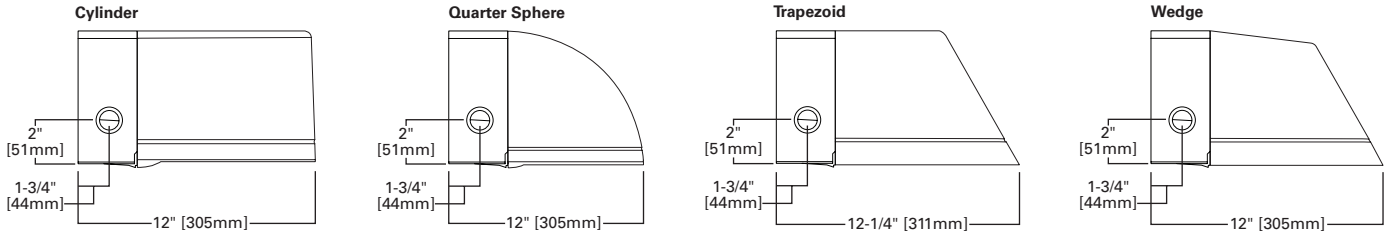
### SHIPPING DATA

Approximate Net Weight:  
18 lbs. (8 kgs.)

## HOOK-N-LOCK MOUNTING



THRUWAY BACK BOX



POWER AND LUMENS BY BAR COUNT

Number of LightBARs	E01		E02		F01		F02	
	21 LED LightBAR				7 LED LightBAR			
Drive Current	350mA				1A			
Power (Watts)	120-277V	25W	47W	26W	50W			
Current (A)	120V	0.22	0.40	0.22	0.42			
	277V	0.10	0.18	0.10	0.19			
Power (Watts)	347V or 480V	31W	52W	32W	55W			
Current (A)	347V	0.11	0.16	0.11	0.17			
	480V	0.16	0.18	0.16	0.18			
<b>Optics</b>								
BL2	Lumens	2,738	5,476	2,260	4,521			
	Bug Rating	B1-U0-G1	B1-U0-G1	B1-U0-G1	B1-U0-G1			
BL3	Lumens	2,702	5,405	2,231	4,462			
	Bug Rating	B1-U0-G1	B1-U0-G2	B1-U0-G1	B1-U0-G1			
BL4	Lumens	2,613	5,225	2,157	4,313			
	Bug Rating	B1-U0-G1	B1-U0-G2	B1-U0-G1	B1-U0-G1			
GZW	Lumens	2,785	5,570	2,299	4,598			
	Bug Rating	B2-U0-G2	B3-U0-G3	B1-U0-G1	B2-U0-G2			
SLR/SLL	Lumens	2,435	4,869	2,010	4,020			
	Bug Rating	B1-U0-G1	B1-U0-G2	B1-U0-G1	B1-U0-G2			

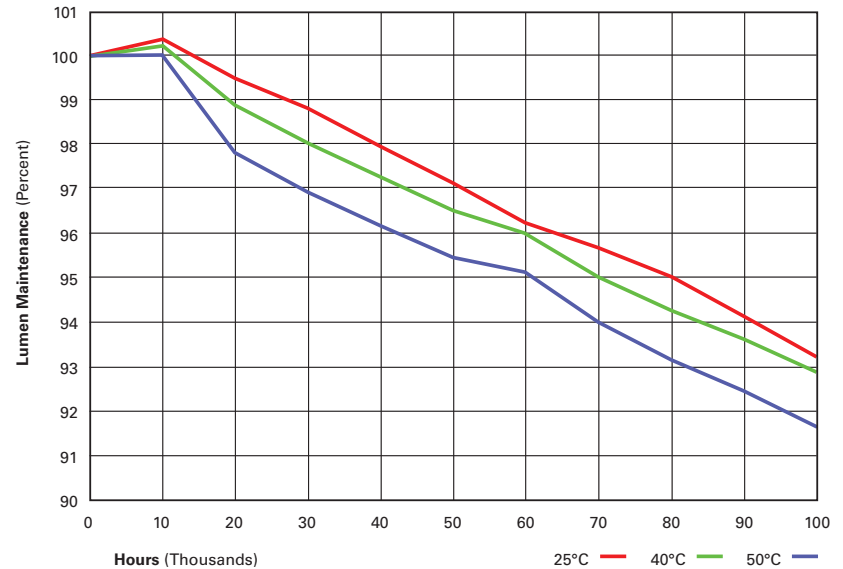
LUMEN MAINTENANCE

Ambient Temperature	25,000 Hours*	50,000 Hours*	60,000 Hours*	100,000 Hours	Theoretical L70 (Hours)
25°C	> 99%	> 97%	> 96%	> 93%	> 450,000
40°C	> 98%	> 97%	> 96%	> 92%	> 425,000
50°C	> 97%	> 96%	> 95%	> 91%	> 400,000

LUMEN MULTIPLIER

Ambient Temperature	Lumen Multiplier
10°C	1.02
15°C	1.01
25°C	1.00
40°C	0.99

\* Per IESNA TM-21 data.



ORDERING INFORMATION

Sample Number: ISC-E02-LED-E1-BL3-GM

Product Family	Number of LightBARs 1,2	Lamp Type	Voltage	Distribution	Color 4
ISC=Impact Elite LED Small Cylinder ISS=Impact Elite LED Small Quarter Sphere IST=Impact Elite LED Small Trapezoid ISW=Impact Elite LED Small Wedge	E01=(1) 21 LED LightBAR E02=(2) 21 LED LightBARs F01=(1) 7 LED LightBAR F02=(2) 7 LED LightBARs	LED=Solid State Light Emitting Diodes	E1=Electronic (120-277V) 347=347V 480=480V 3	BL2=Type II w/Back Light Control BL3=Type III w/Back Light Control BL4=Type IV w/Back Light Control GZW=Wall Grazer Wide SLL=90° Spill Light Eliminator Left SLR=90° Spill Light Eliminator Right	AP=Grey BZ=Bronze BK=Black DP=Dark Platinum GM=Graphite Metallic WH=White
<b>Options (Add as Suffix)</b>				<b>Accessories (Order Separately) 10</b>	
2L=Two Circuits 5 7030=70 CRI / 3000K CCT 6 7050=70 CRI / 5000K CCT 6 7060=70 CRI / 5700K CCT 6 8030=80 CRI / 3000K CCT 6 P=Button Type Photocontrol (Available in 120, 208, 240 or 277V. Must Specify Voltage) OSB=Occupancy Sensor with Back Box (Specify 120V or 277V) 7 BBB-XX=Battery Pack with Back Box (Specify 120V or 277V) 8 CWB-XX=Cold Weather Battery Pack with Back Box (Specify 120V or 277V) 9 DIM=0-10V Dimming Drivers LCF=LightBAR Cover Plate Matches Housing Finish ULG=Uplight Glow TR=Tamper Resistant Hardware				MA1253=10kV Circuit Module Replacement MA1254-XX=Thruway Back Box - Impact Elite Trapezoid MA1255-XX=Thruway Back Box - Impact Elite Cylinder MA1256-XX=Thruway Back Box - Impact Elite Quarter Sphere MA1257-XX=Thruway Back Box - Impact Elite Wedge	

- NOTES:
- Standard 4000K CCT and greater than 70 CRI. LightBARs for downlight use only.
  - 21 LED LightBAR powered by 350mA and 7 LED LightBAR powered by 1A.
  - Only for use with 480V Wye systems. Per NEC, not for use with ungrounded systems, impedance grounded systems or corner grounded systems (commonly known as Three Phase Three Wire Delta, Three Phase High Leg Delta and Three Phase Corner Grounded Delta systems).
  - Custom and RAL color matching available upon request. Consult your lighting representative at Eaton for more information.
  - Low-level output varies by bar count. Consult factory. Not available with 347V or 480V. Available with two bars (E02 or F02) only.
  - Extended lead times apply.
  - Available with E02 or F02, only one bar on street side will be wired to sensor. Time delay factory setting 15-minutes. When ordered with PC option, both bars are connected to photocontrol as primary switching means. Standard sensor lens covers 8' mounting height, 360° coverage, maximum 48' diameter. Not available in all configurations or with BBB or CWB options.
  - Specify 120V or 277V. LED standard integral battery pack is rated for minimum operating temperature 32°F (0°C). Operates one bar for 90-minutes. Not available in all configurations or with OSB option. Consult factory.
  - Specify 120V or 277V. LED cold weather integral battery pack is rated for minimum operating temperature -4°F (-20°C). Operates one bar for 90-minutes. Not available in all configurations or with OSB option. Consult factory.
  - Replace XX with color suffix.